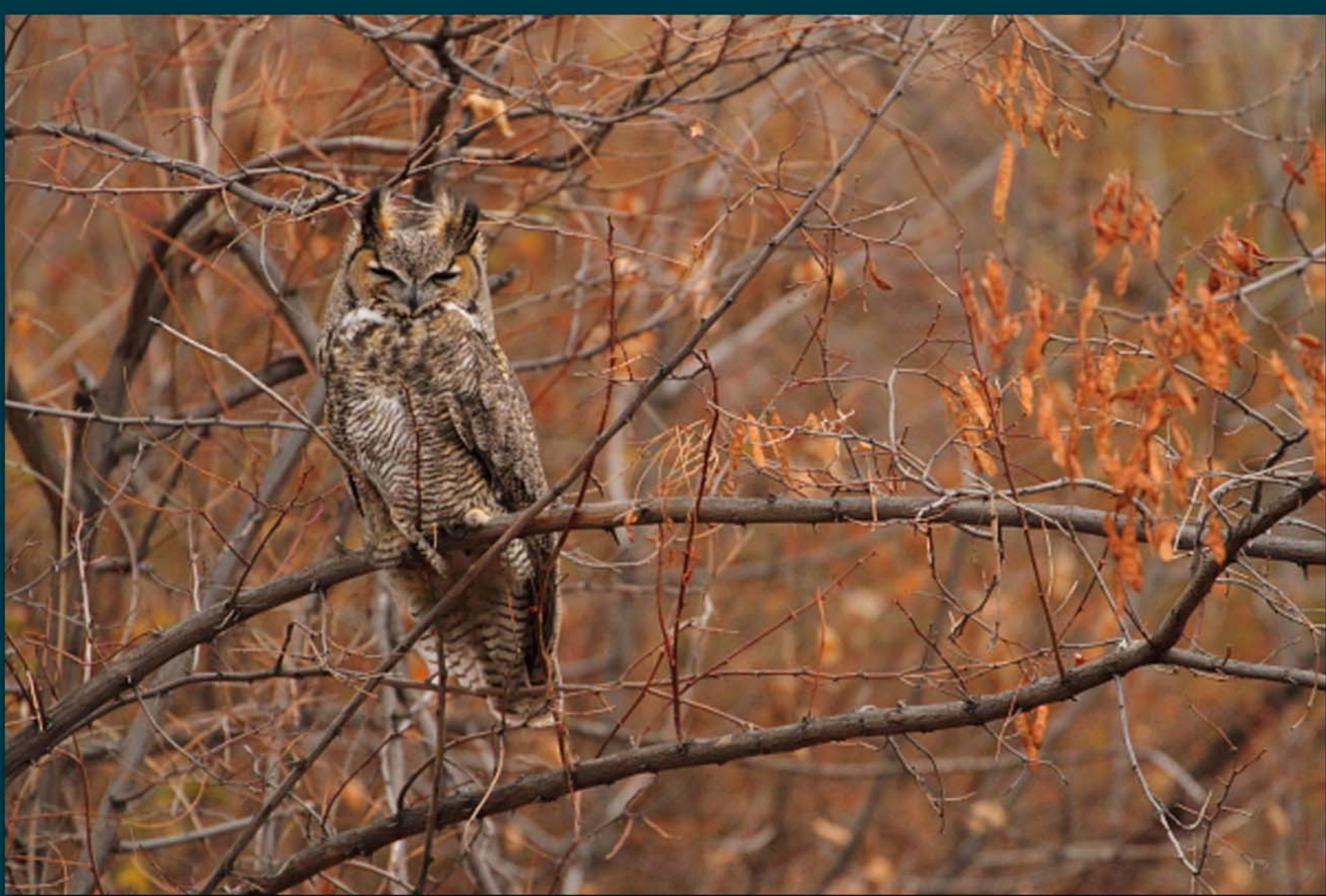


# Land Classifications



## WHAT ARE LAND CLASSIFICATIONS?

- Public Lands are allocated and classified into management categories which, based upon resources available and public needs, will provide for appropriate use while protecting project resources.
- This zoning determines what type of resource management activities, and facility development are allowed.
- Provides a conceptual guide for the use, management, and development of all project lands.

## WHY UPDATE THE LAND CLASSIFICATIONS?

- The original land classifications do not meet current regulations.
- Current use of project lands differ from what was originally planned for and land classifications need to reflect those changes.
- Current Master Plan focuses on initial recreation facilities development and little on natural resources and fish and wildlife

## Lower Granite Land Classification Now and Proposed Future

Current Land Classifications	Proposed New Land Classifications
Project Operations <ul style="list-style-type: none"><li>•Project Structures</li><li>•Public Port Terminal</li><li>•Industrial Use and Access</li></ul>	Project Operations
Recreation <ul style="list-style-type: none"><li>•Recreation Lands</li><li>•Operations: Recreation Intensive Use</li></ul>	High Density Recreation
Operations: Recreation Low Density Use Operations: (Future) Recreation Intensive Use Fish and Wildlife Operations: Wildlife Management - Intensive Operations: Wildlife Management - Moderate	Multiple Resource Management <ul style="list-style-type: none"><li>•Low Density Recreation</li><li>•Future/Inactive Recreation Lands</li><li>•Wildlife Management</li><li>•Vegetative Management</li></ul>
Natural and Forest Operations: Natural Area	Environmentally Sensitive Area
	Mitigation

## WHAT CAN YOU EXPECT TO SEE?

The 1974 Master Plan used different zoning terminology than current Corps guidance. We will re-assess the projects environmental attributes, public needs, current conditions. The focus will be on gathering public input and developing detailed resource inventories and analyzing potential impacts to guide the assessment of future recreational needs and desired future condition for natural resources.



US Army Corps  
of Engineers  
BUILDING STRONG.



# Land Classifications

## Land Classifications

► **Operations** - This classification category should include those lands required for the dam, spillway, switchyard, offices, maintenance facilities, and other areas that are used solely for project operations.



► **High Density Recreation** - Land developed for intensive recreational activities by the visiting public, including developed recreation areas and areas for concession, resort, and quasi-public development.



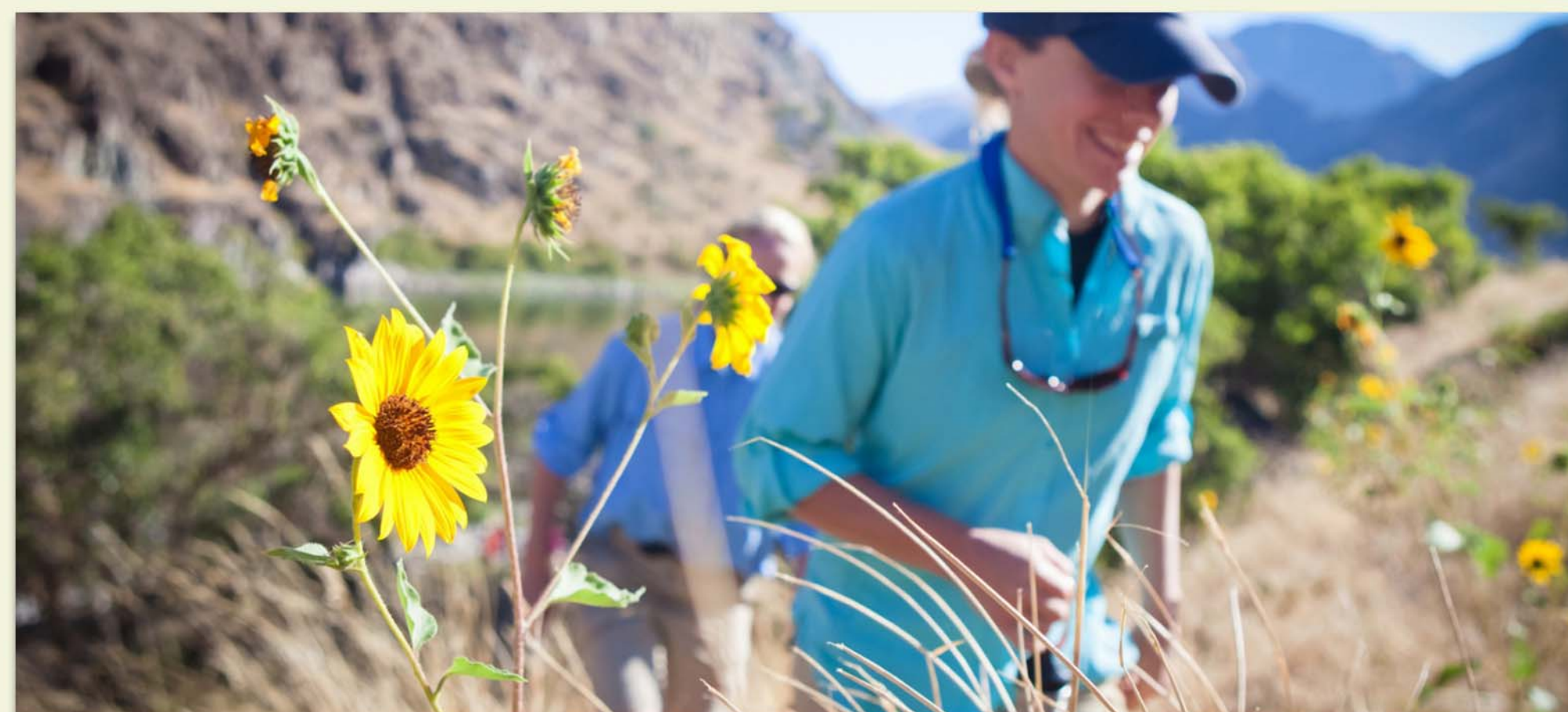
► **Mitigation** - This will only include land acquired or designated specifically for mitigation.

► **Environmentally Sensitive Areas** - These are areas where scientific, ecological, cultural or aesthetic features have been identified. These areas must be considered by management to ensure the sensitive areas are not adversely impacted.



### ► **Multiple Resource Management (MRM)**

**MRM - Recreation Low Density** - low density recreation activities such as hiking, primitive camping, wildlife observation, hunting, or similar low density recreational activities.



**MRM - Wildlife Management** - fish and wildlife management activities. Lands in this subcategory shall be evaluated for consideration for lease or license to the state or shall be designated for direct management by the Corps.



**MRM - Vegetative Management** - management activities for the protection and development of forest and vegetative cover.



**MRM - Inactive and/or Future Recreation Areas** - recreation areas planned for the future or that have been temporarily closed. These lands will be classified as multiple resource management in the interim.